



E-Freight setup guide

The programs and setting required to run the E-Freight system



v11

For the newest version, please scan the QR code below:



Contents

1. Supported browser
2. Compatibility View settings in Internet Explorer:
3. Compatibility settings in Microsoft Edge
4. Trusted sites settings
5. Security level
6. Java Runtime Environment
7. Checking the Java Runtime Environment
8. Java Application Blocked
9. Clearing the Java Cache
10. Java .jnlp files associaton
11. Proxy settings
12. 403 – Access is denied

1. Supported browser

Although you can access E-Freight's main page with any browser, the modules will only work with **Internet Explorer 9, 10, 11 and Microsoft Edge**. For your convenience, you can download the **shortcut icon** from E-Freight's **Download** menu on the left side of the main page.



This shortcut will open E-Freight in Internet Explorer regardless of what your default browser is. Please note that Internet Explorer is available on all Windows operation systems, including Windows 10.

Please be advised that Microsoft Edge is **NOT** identical with Internet Explorer!

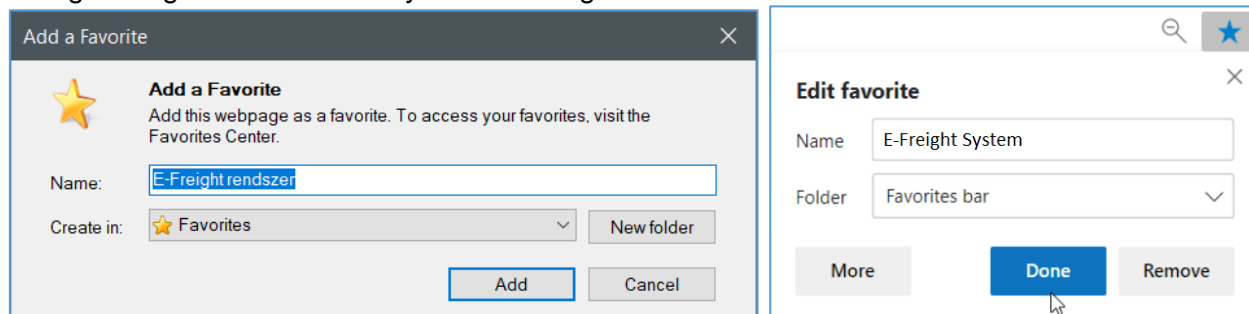


Microsoft Edge's icon



Internet Explorer's icon

Once you login to the E-Freight system, consider adding the site to the Favorites in Internet Explorer or Edge using the **Ctrl+D** hotkeys and clicking on the **Add or Done** button.



Adding a Favorite in Internet Explorer and Microsoft Edge

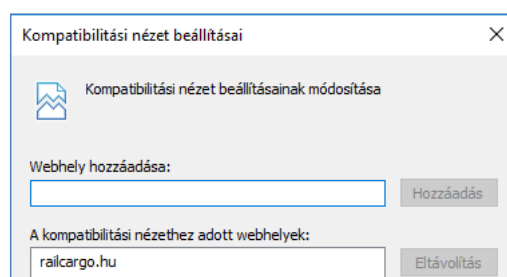
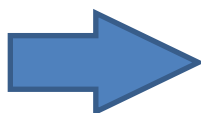
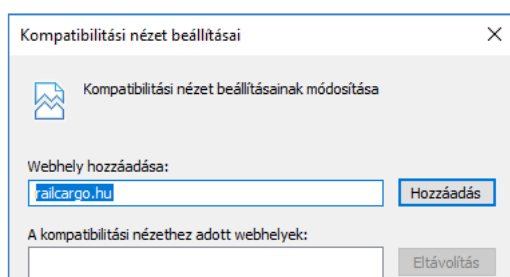
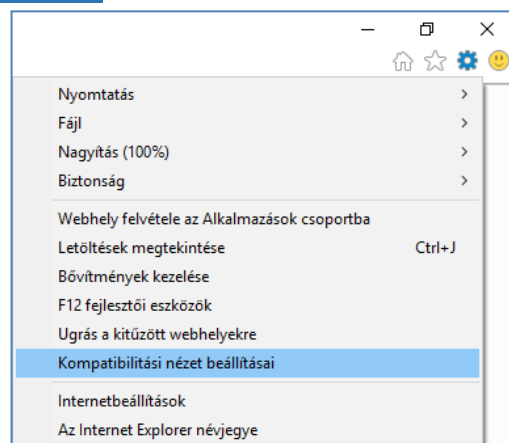
2. Compatibility View settings in Internet Explorer:

Should you use an Internet Explorer higher than version 9, we advise adjusting the **Compatibility View settings**.

You can find the settings in the top-right corner of your browser, by clicking on the gears button (⚙️) or the Tools menu (**Alt + X**), then selecting **Compatibility View settings**.

On the next window the browser fills the “Add this website.” field with **railcargo.hu**.

By clicking on the **Add** button, the address is added to the list below.



After closing the window, **the site gets reloaded**, and is ready for use.

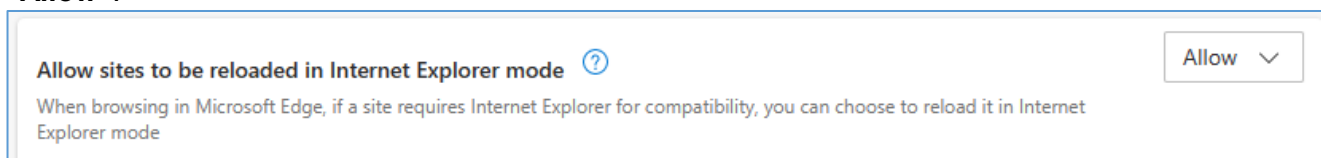
3. Compatibility settings in Microsoft Edge

At the top right corner, in the three dots menu click on the **Settings** option.

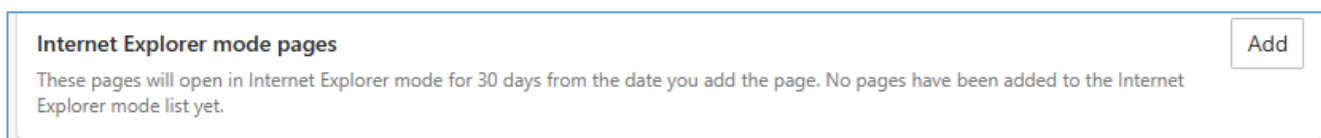
On the next page, in the left hand side menu click on **Default browser** option.

Or you can copy the following text into your Edge's address bar: **edge://settings/defaultBrowser**

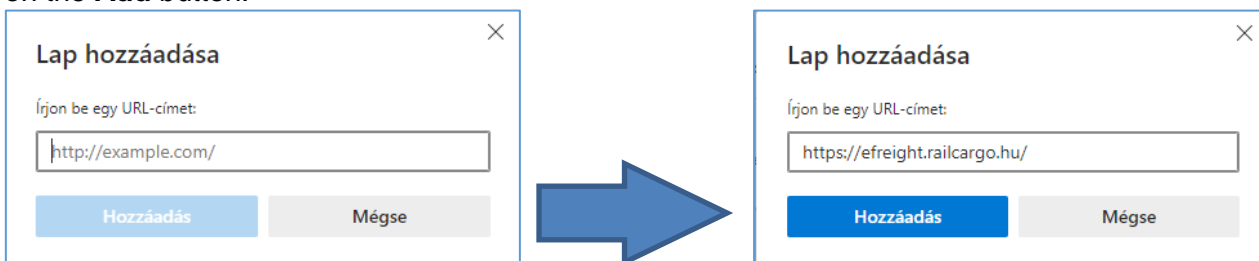
Switch on “**Allow sites to be reloaded in Internet Explorer**” setting or set it from “Default” to “**Allow**”.



After this, click on the **Add** button next to the “**Internet Explorer mode pages**” option.



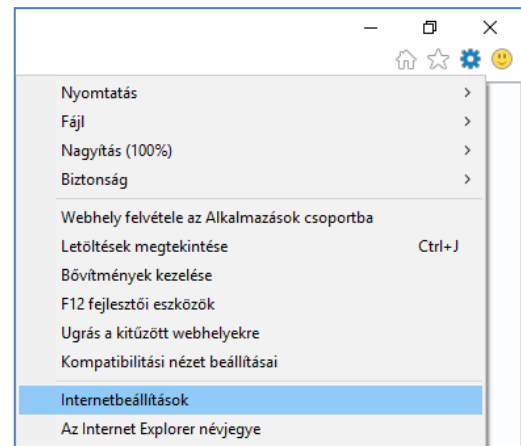
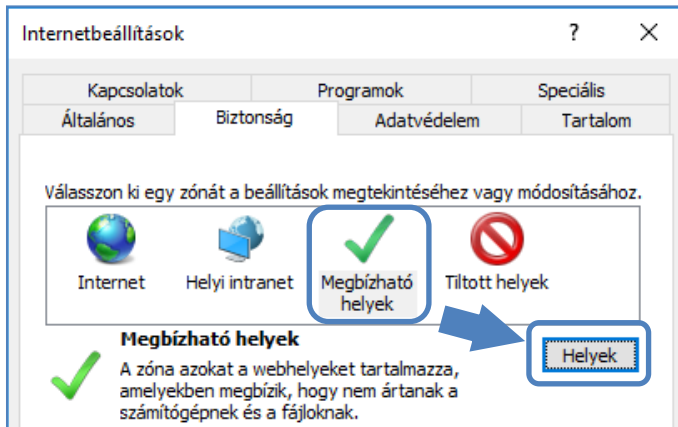
On the next window copy the **https://efreight.railcargo.hu/** address into the field, and then click on the **Add** button.



The browser needs to be restarted in order for the changes to take effect.

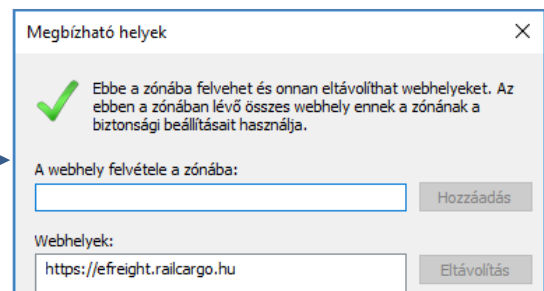
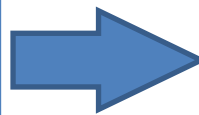
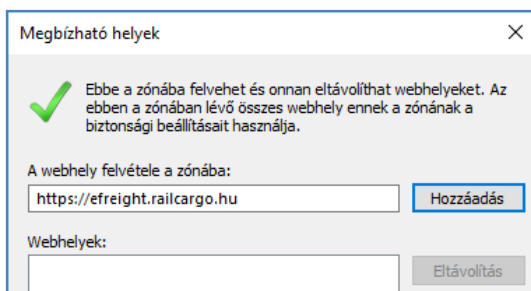
4. Trusted sites settings

It is advised to add the address of E-Freight to the Trusted sites in Internet Explorer. To do so you have to click on **Tools** then **Internet settings**, on the next window under the **Security** tab select **Trusted sites**, then click on the **Sites** button.



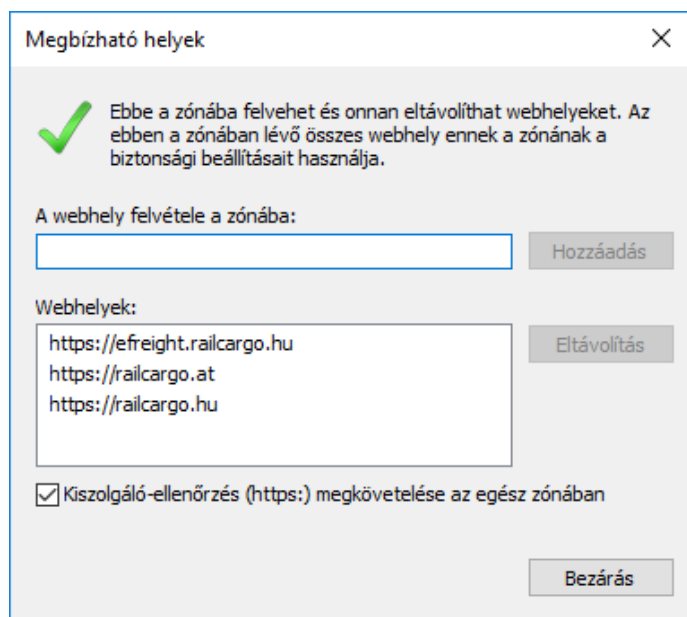
This opens the **Trusted sites** window then copy the URL of E-Freight into the “**Add this website to the zone:**” field: <https://efreight.railcargo.hu>

then click on the **Add** button.



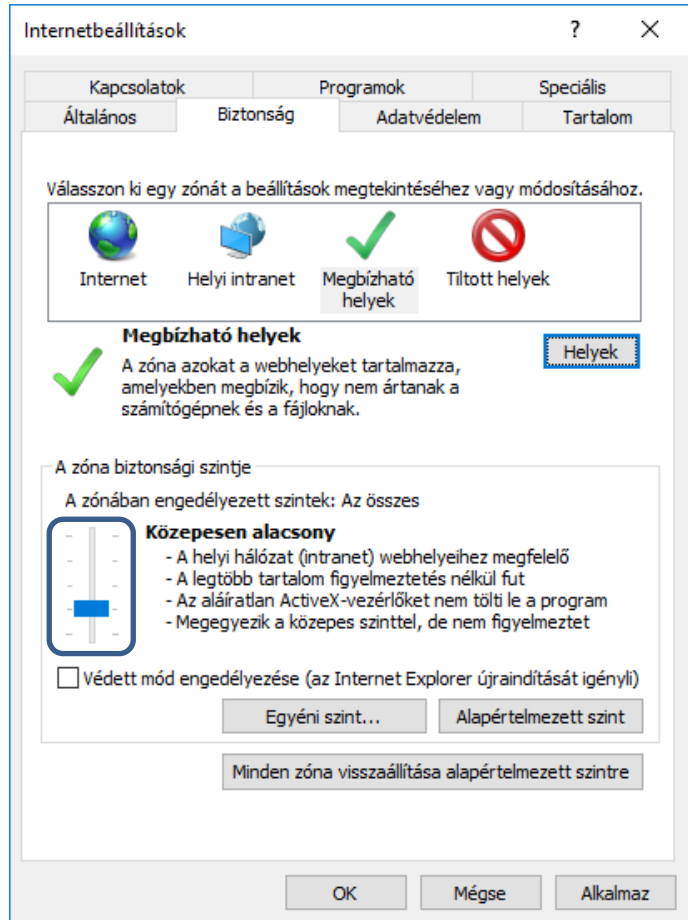
Repeat the process with the following URL's:
<https://railcargo.hu>
and
<https://railcargo.at>

When done click on the **Close** button.



5. Security level

Set the slider in the “Security level for this zone” field to **Medium-low**.



Internetbeállítások

Kapcsolatok Programok Speciális

Általános Biztonság Adatvédelem Tartalom

Válasszon ki egy zónát a beállítások megtekintéséhez vagy módosításához.

Internet Helyi intranet **Megbízható helyek** Tiltott helyek

Megbízható helyek

A zóna azokat a webhelyeket tartalmazza, amelyekben megbízik, hogy nem ártanak a számítógépnek és a fájloknak.

A zóna biztonsági szintje

A zónában engedélyezett szintek: Az összes

Közepesen alacsony

- A helyi hálózat (intranet) webhelyeihez megfelelő
- A legtöbb tartalom figyelmeztetés nélkül fut
- Az aláírtan ActiveX-vezérlőket nem tölti le a program
- Megegyezik a közepes szinttel, de nem figyelmeztet

☐ Védett mód engedélyezése (az Internet Explorer újraindítását igényli)

Egyéni szint... Alapértelmezett szint

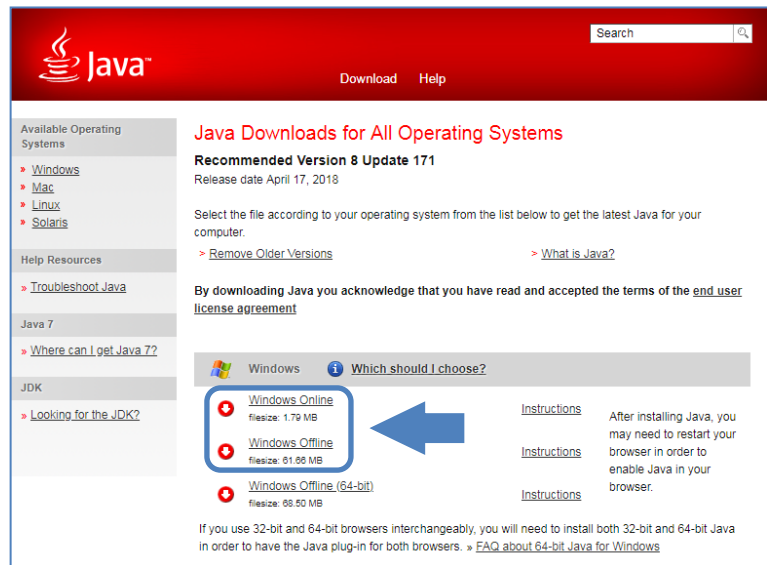
Minden zóna visszaállítása alapértelmezett szintre

OK Mégse Alkalmaz

6. Java Runtime Environment

For the **Wagon order** and **Electronic consignment data** modules to operate properly, a **Java Runtime Environment** is required to be installed on your workstation.

The installer for the latest Java RE can be downloaded from the following site:



Java Downloads for All Operating Systems

Recommended Version 8 Update 171
Release date April 17, 2018

Select the file according to your operating system from the list below to get the latest Java for your computer.

> [Remove Older Versions](#) > [What is Java?](#)

By downloading Java you acknowledge that you have read and accepted the terms of the [end user license agreement](#)

Windows Which should I choose?

- Windows Online
filesize: 1.79 MB
- Windows Offline
filesize: 61.66 MB
- Windows Offline (64-bit)
filesize: 66.50 MB

Instructions After installing Java, you may need to restart your browser in order to enable Java in your browser.

If you use 32-bit and 64-bit browsers interchangeably, you will need to install both 32-bit and 64-bit Java in order to have the Java plug-in for both browsers. » [FAQ about 64-bit Java for Windows](#)

<https://www.java.com/en/download/manual.jsp>

We suggest installing a **32-bit** environment regardless of your Operation System.

The installation will require Administrator privileges; if you are not and administrator on your workstation, please contact your system administrator regarding the install of the required environment.

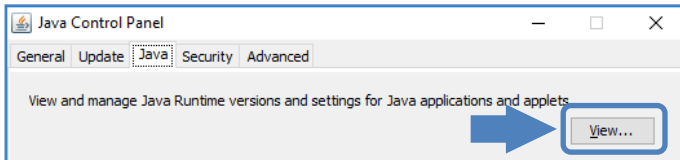
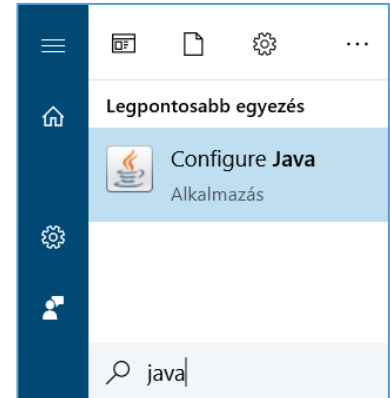
7. Checking the Java Runtime Environment

After the installation of the Java RE, you can check it with the following method:

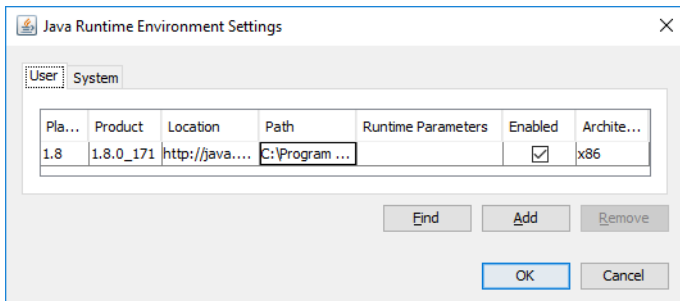
Click on the Start menu , then type “java”.

The first item on the top of the menu will be the “**Configure Java**” application.

After clicking on the application the Java Control Panel will open.



On the Java tab click on the “View...” button to access the Java Runtime Environment Settings.



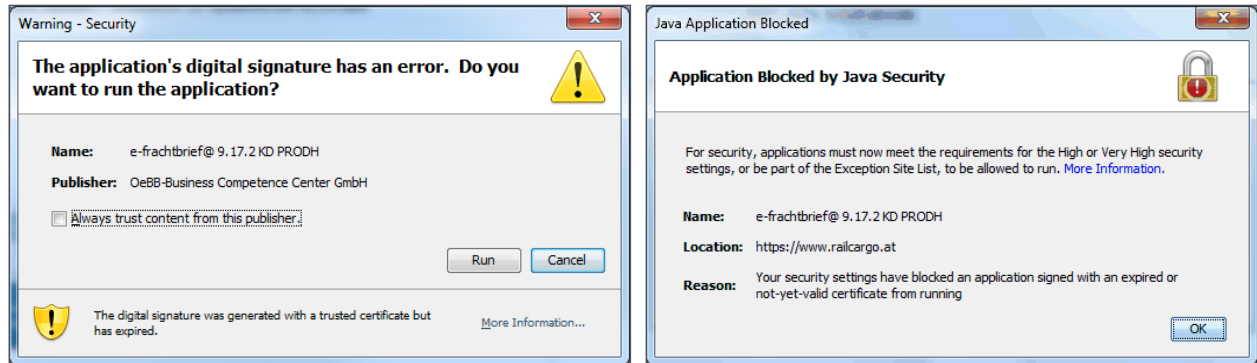
There you will find the list of installed Java Runtime Environments.

In the Enabled column you can enable and disable environments, should the need arise.

In the Architecture column the bit version is listed. For the **Electronic shipping documents** and **Wagon order** modules to function properly, a **32-bit or x86 version** is required.

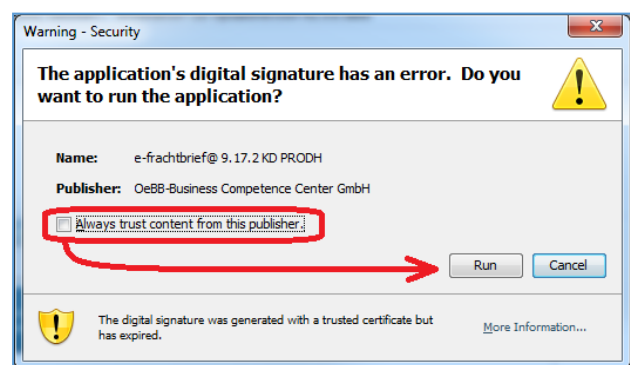
8. Java Application Blocked

Should you encounter one of the following messages, it'll indicate that the digital signature of the application is outdated for the Java to run.



In the first case the user has a Java RE with an **older version than 7u51** installed on its PC.

Tick the box before text „**Always trust content from this publisher**”, then click on „**Run**”. The application will load, and can be used.

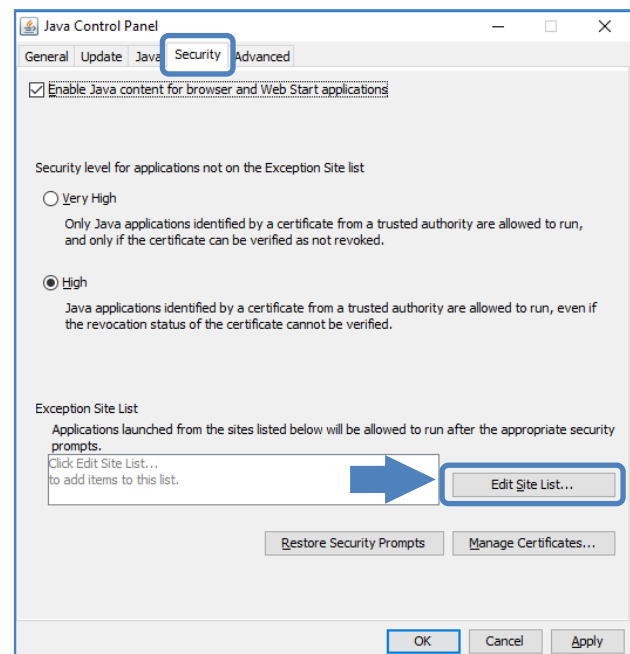
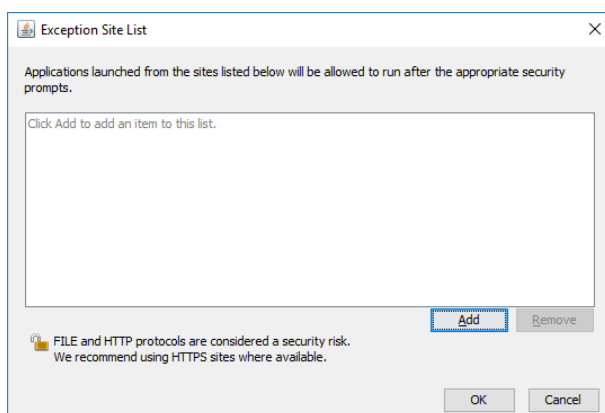


In the second case the user has a Java RE version **7u51 or higher** on its PC.

In this case close the message by clicking on the **OK** button.

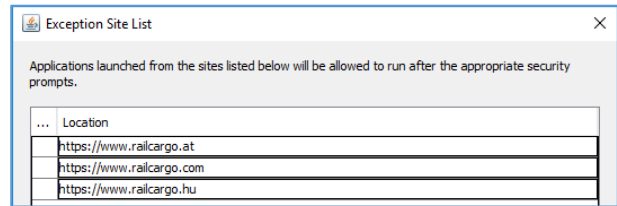
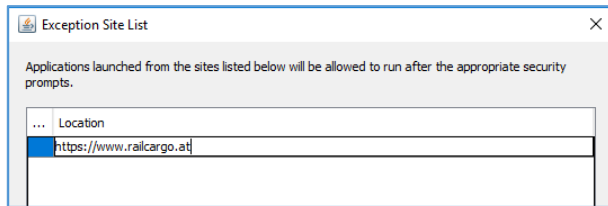
Then access **Java Control Panel** as described in article [#5](#) of this guide.

On the **Security** tab, click on the „**Edit Site List...**” button to access the Exception Site List.

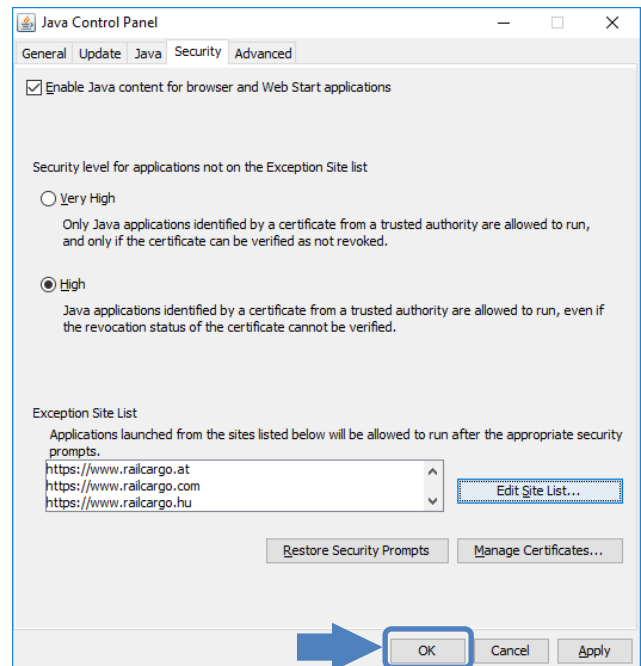


Click on the **Add** button, then copy the following URL's one by one into the fields:

https://www.railcargo.at
https://www.railcargo.com
https://www.railcargo.hu



By clicking on the **OK** button you can confirm the settings.



Using the **OK** button, we close the **Java Control Panel**, then relaunch the application.

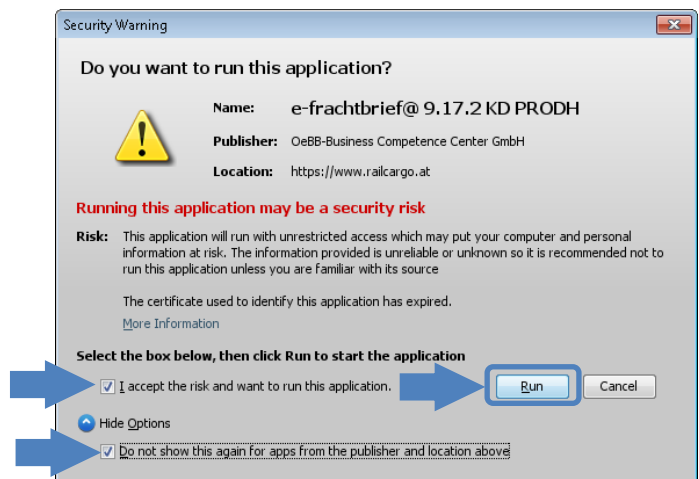
During the loading we get the following message.

Tick the box before text „***I accept the risk and want to run this application***”.

Click on the **blue downward** arrow and tick the revealed box.

Finally click on the **Run** button.

After these steps the application can be accessed and used.



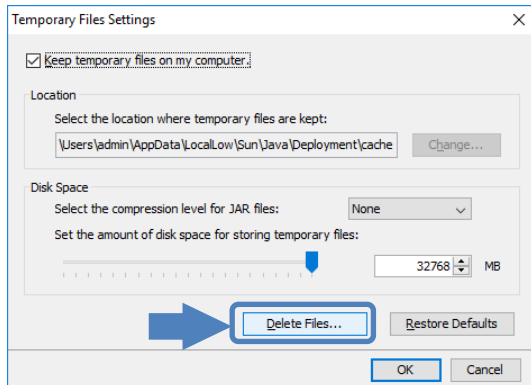
9. Clearing the Java Cache

Should you encounter the following message after launching the **Electronic shipping documents** module, please follow these steps.

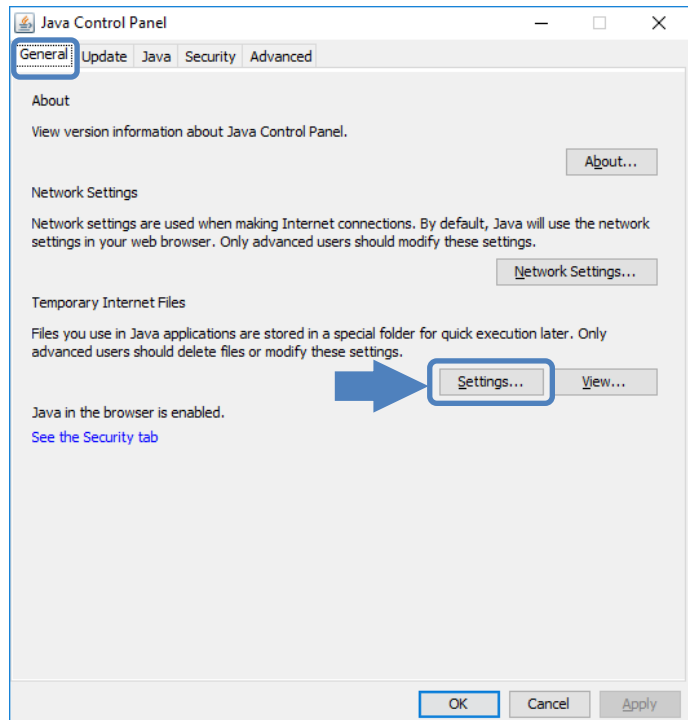
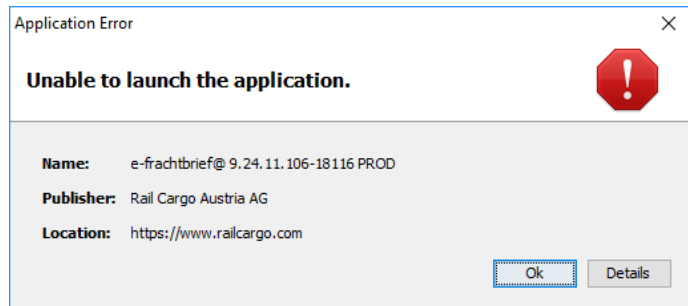
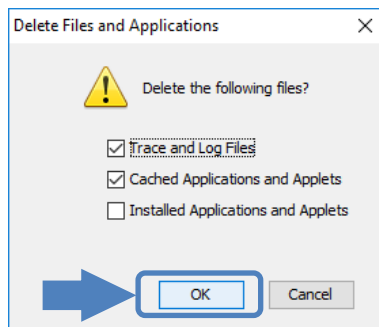
First close the message by clicking on the **OK** button, then access the **Java Control Panel** as described in the in article [#5](#) of this guide.

On the General tab in the *Temporary Internet Files* section click on the “**Settings...**” button.

On the bottom of the next window click on the “**Delete Files...**” button,



then on the **OK** button on the next window.



The process takes about 1 minute; should the program freeze, it'll still finish around this given timeframe. After a waiting a little you can close the task using the Task manager.

Using the **OK** button, we close the **Java Control Panel**, then relaunch the application.

10. Java .jnlp files associaton

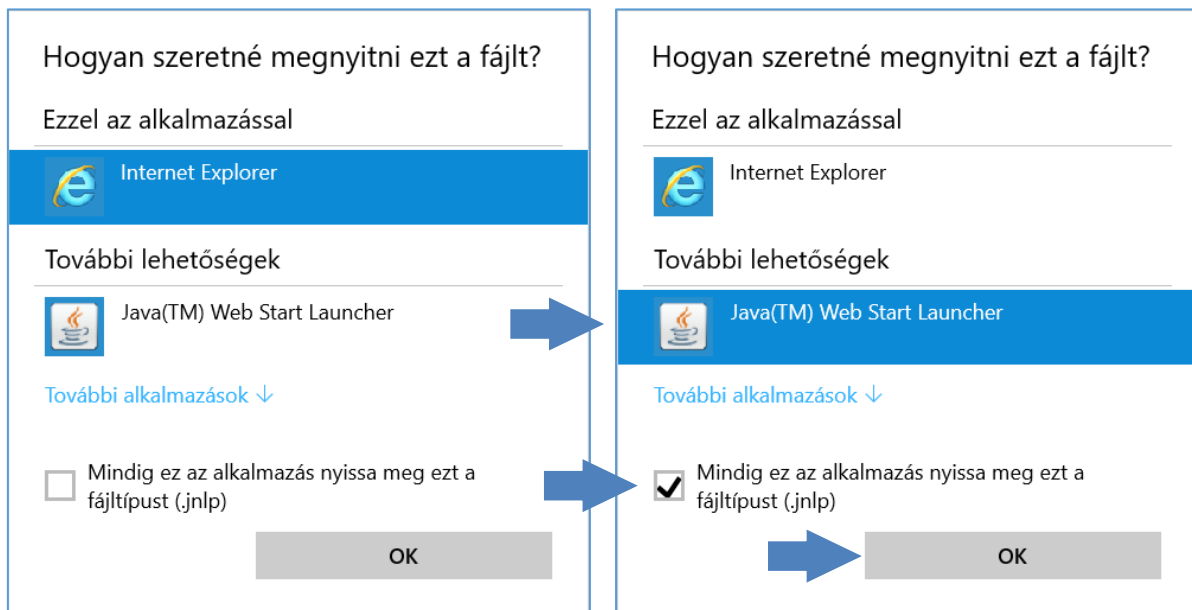
Should you encounter the following message when launching **Electronic shipping documents** module,



save the file and open the folder where it was saved.

Right-click on the file and choose **“Open with”** then **“Choose default program...”**

To open JNLP files you have to set **Java(TM) Web Start Launcher** as the default program. After selecting Java, **tick the box** before *“Always use the selected program to open this kind of file”*, then click on the **OK** button.



After clicking on the OK button, the application of **Electronic shipping documents** will launch.



Also the icon of the file changes to

After this the file can be deleted and it won't be necessary do download it anymore.

Should Java not appear in the list of available programs, click on the **More apps** link at the bottom. A new list of programs will appear, from where you can choose.

Should the list still not contain **Java Web Start Launcher**, then click on the link **“Look for another app on this PC”**.

In the opening window navigate to the following folder:

C:\Program Files (x86)\Java\<actually installed version>\bin

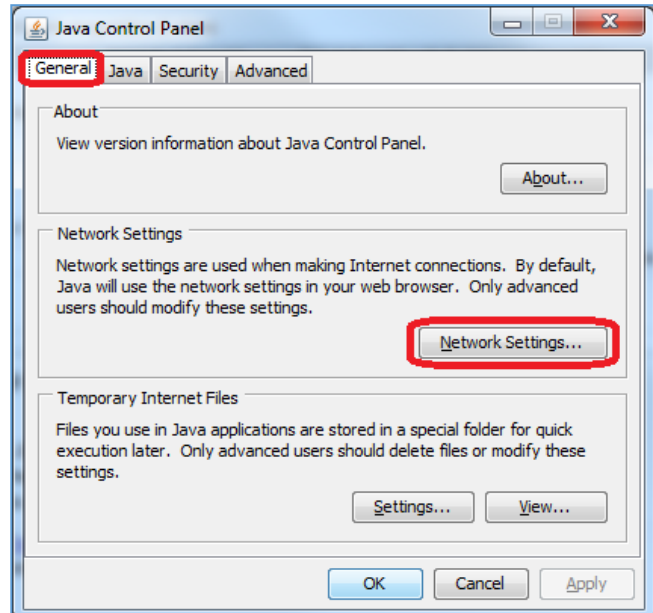
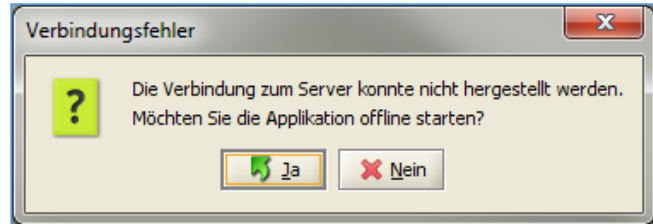
Here select **javaws.exe**, then click on the **Open** button.

After this the file will open and the application will be launched.

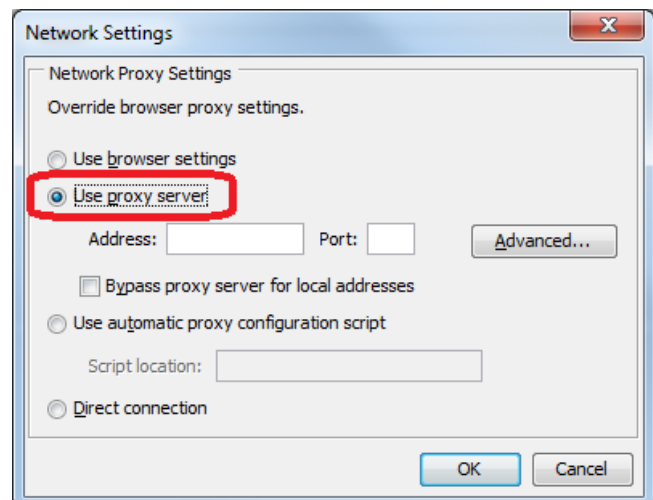
11. Proxy settings

Should the message on the right appear after launching the application from the **Electronic shipping documents** module, the following steps need to be taken.

Access the **Java Control Panel** as described in the in article [#5](#) of this guide. On the **General** tab at Network Settings click on the **Network Settings...** button.



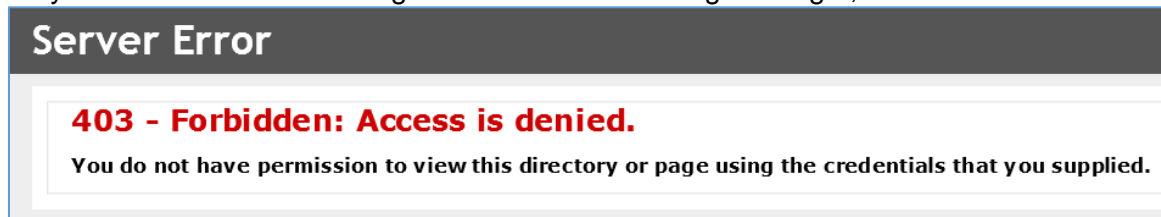
On the upcoming window select **Use proxy server**, then type in your proxy settings.



Clicking on the **OK** button you exit **Java Control Panel** and launch the application from before.

12. 403 – Access is denied

Should you encounter the following screen when accessing E-Freight,



it's because you typed "efreight.railcargo.hu" in your browser, and unfortunately the address bar starts with "http://" instead "https://".

This can be overcome by simply typing an "s" after "http".

After a successful login we advise you to either Add the E-Freight's site to the Favorites in Internet Explorer or download the shortcut icon as mentioned in the [first article](#) of this guide.

Should you encounter issues after making the settings in this guide, feel free to contact us on the following availabilities:

Monday - Thursday: 8:00 – 15:00
Friday: 8:00 – 13:00

E-mail: efreight@railcargo.com
Phone: +36-1/512-7777

For the latest guide click on or scan the QR code at the starting page of this guide.